

P1/PD Piston Pump

A-Type Remote Control

A-Type Mechanical and Remote Control
Pilot Operated Compensator



Parker Hannifin's hydraulic P1/PD series piston pumps will now feature the new "A" series compensator. Following the success of the PV plus series pumps, all models of the P1/PD will now use the "A" compensator for pilot operated and remote compensation options.

Previous P1/PD models featured the "R" style compensator that required three separate bodies that were stacked together to form a single module. The new "A" compensator takes advantage of new spool and dart design that allows Parker to provide two functions in one body. The immediate benefit is realized with a smaller foot-print and less weight. Additionally, this design allows for external signals to be fed to the pump more cleanly.



A-Type Compensator:

The new "A" style compensator will provide extremely stable performance while providing max pressure control. The chart on the adjacent page shows the new letter designations.

The addition of the "A" series compensator, will continue to enhance

the performance value of the P1/PD piston pump for application in both the mobile and industrial markets. The new compensator is available on existing 60, 75, 100 and 140cc pumps and on soon to be released 18, 28 and 45cc displacements.

For additional information contact:

Parker Hannifin Corporation
Hydraulic Pump Division
14249 Industrial Parkway
Marysville, OH 43040 USA
phone 937 644 4435
fax 937 642 3639
www.parker.com



ENGINEERING YOUR SUCCESS.

A-Type Remote Control

P1/PD Hydraulic Piston Pumps
Feature new Streamlined Compensators

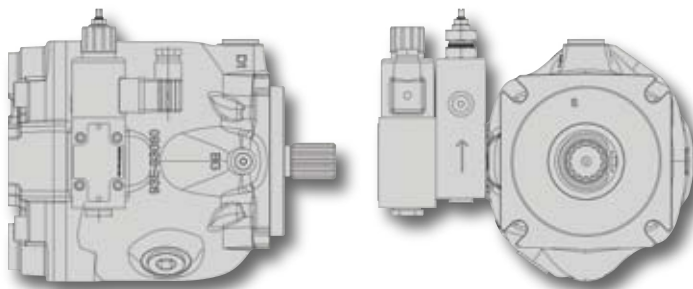


NEW
A-Type Design



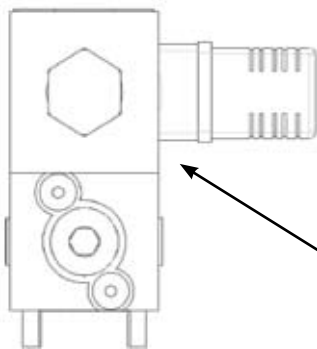
Original
R-Type Design

Remote Compensator AE* or AF*

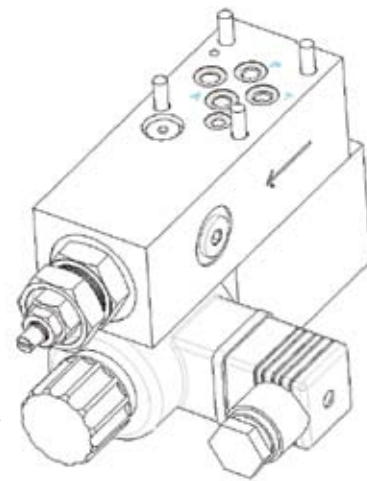


AE* or AF* Control
CW Orientation
P*075 Shown

Pilot operated pressure limiter with electrical adjustment "AE" or "AF"

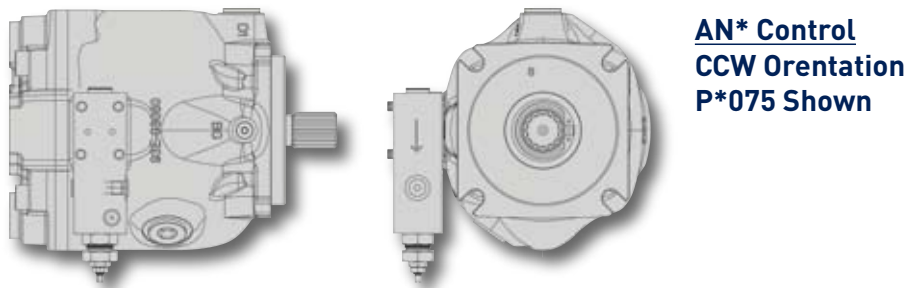
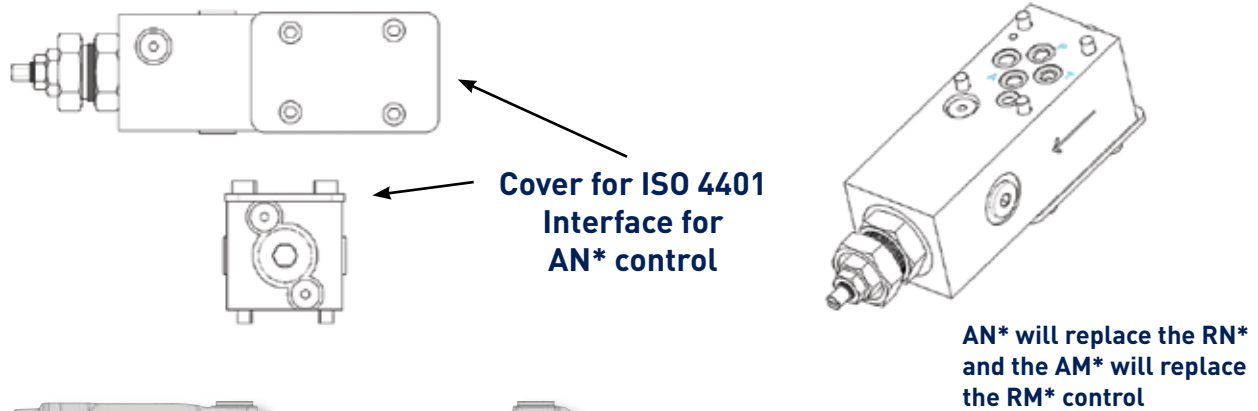


Proportional
Pressure Valve

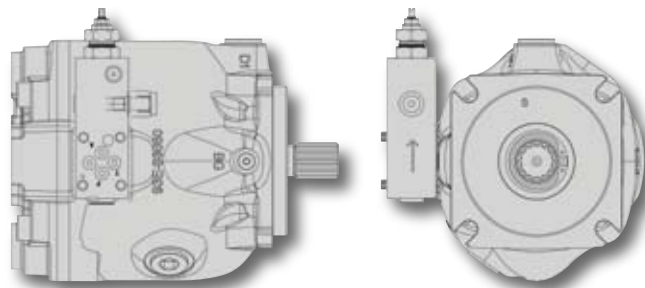


AE* is a 12V option, and the AF* is the same, except 24V

Remote Compensator AN* & AM*



Pilot operated pressure limiter with mechanical adjustment and ISO 4401 interface "AN"



AM* Control
CW Orientation
P*075 Shown

The AM* control will not have the ISO 4401 Interface

Pilot operated pressure limiter with mechanical adjustment and vent port "AM"

Letter Designations

Old Letters	New Letters	Description
RN	AN	Pilot operated control with ISO-4401 (NG 6) interface and shipping cover.
RM or RH	AM	Pilot operated pressure limiter control with mechanical adjustment and vent port.
RE	AE	Pilot operated pressure limiter control with proportional electronic adjustment and is a 12 volt dc option.
RF	AF	AF is the 24 vdc version of AE.



Parker Hannifin Corporation
Hydraulic Pump Division
14249 Industrial Parkway
Marysville, OH 43040 USA
phone 937 644 4435
fax 937 642 3639
www.parker.com